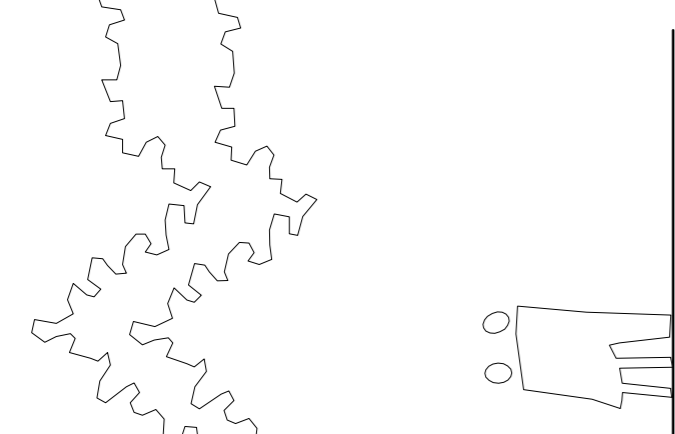
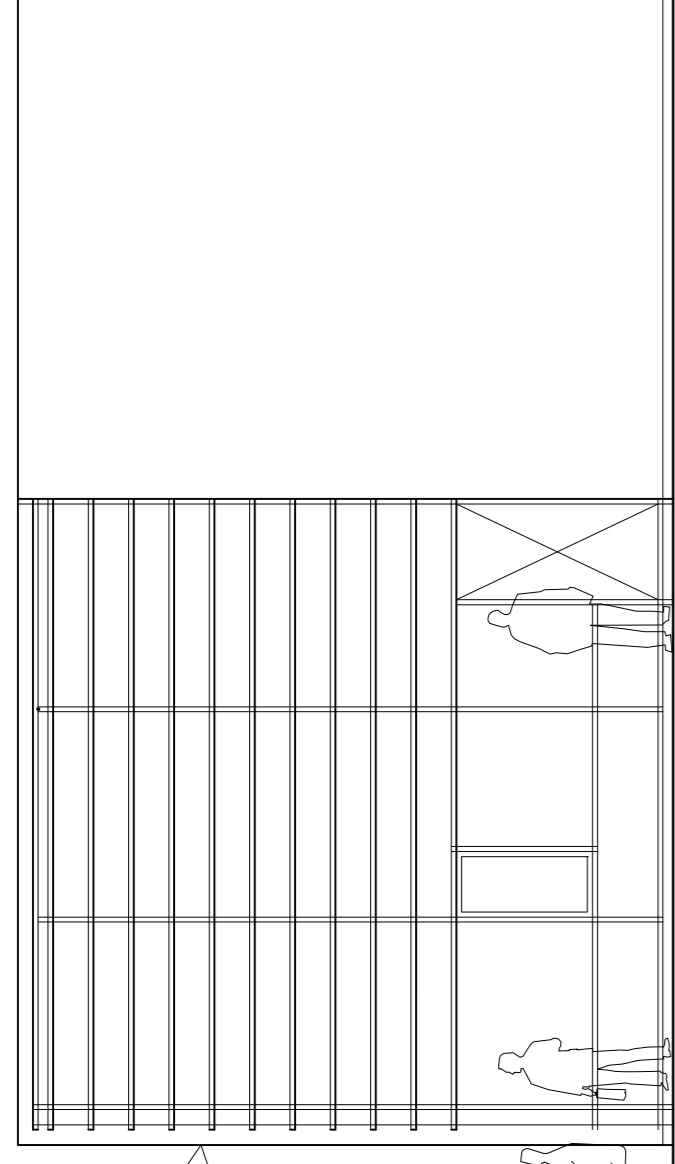


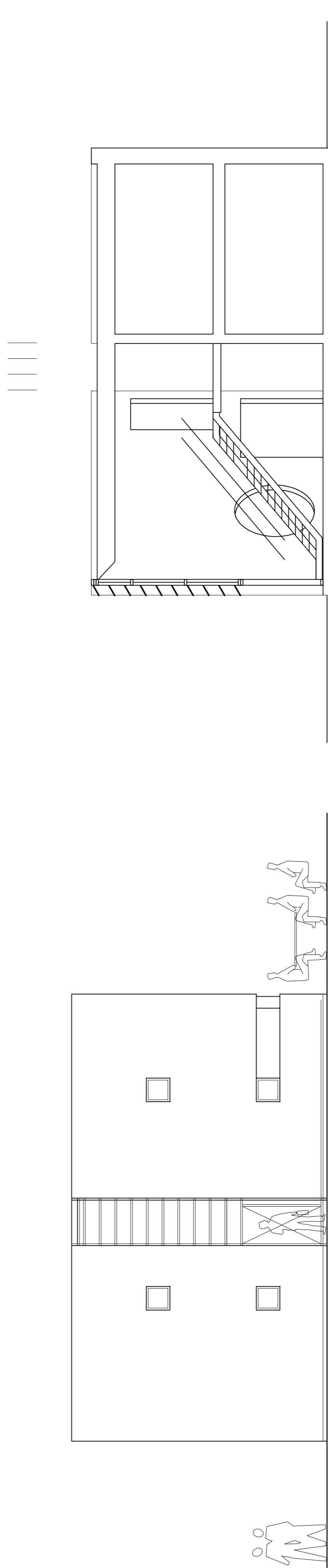
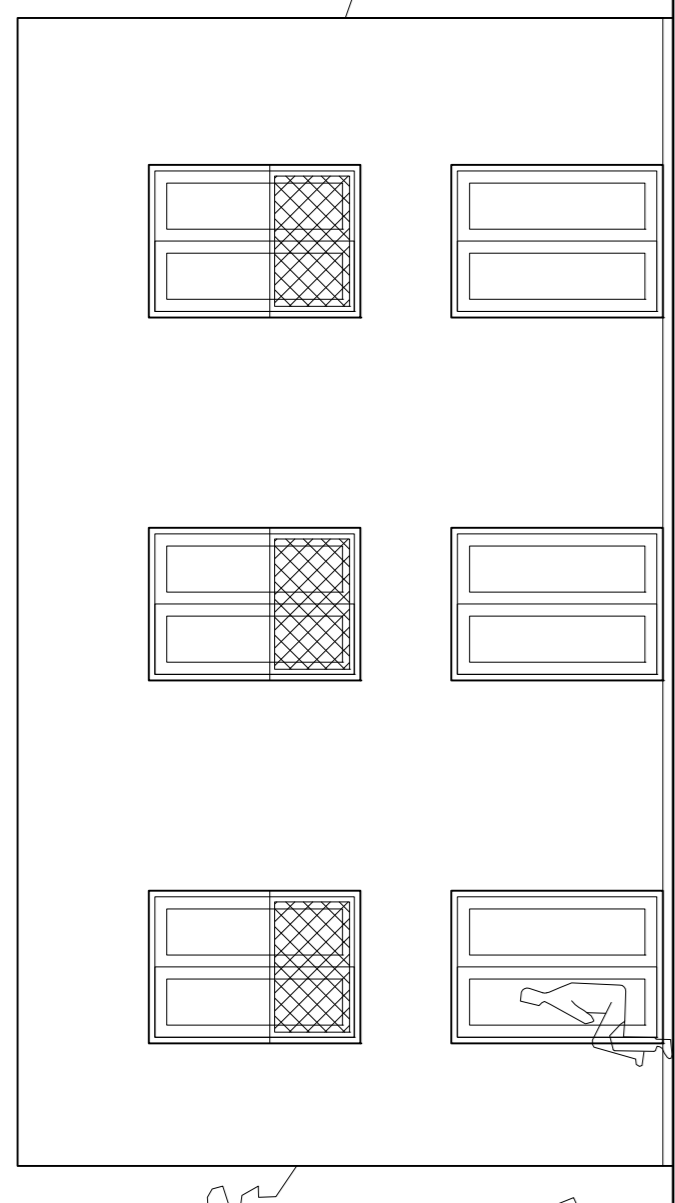
Facade mod syd-vest



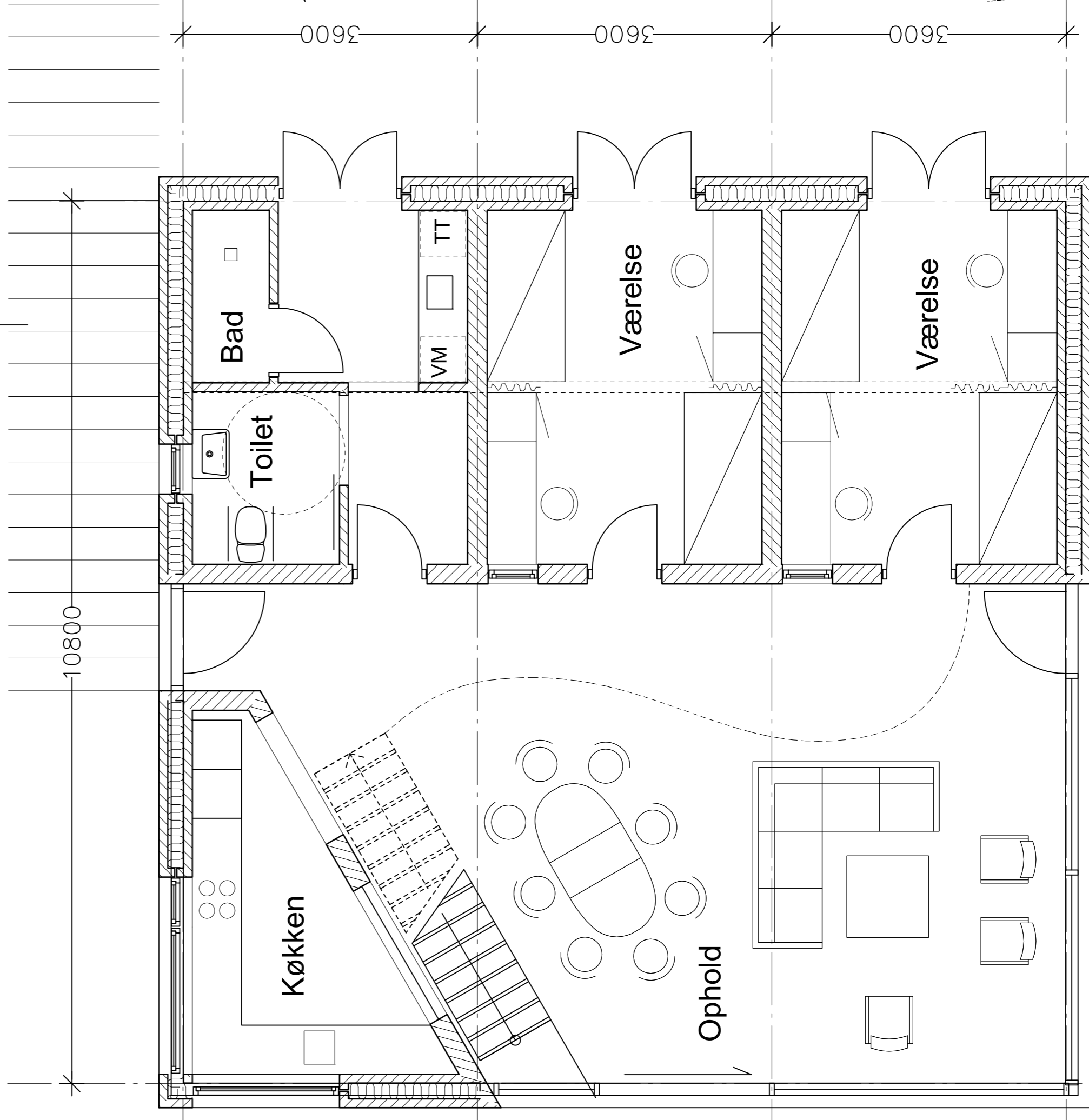
Facade mod syd-øst



Facade mod nord-øst

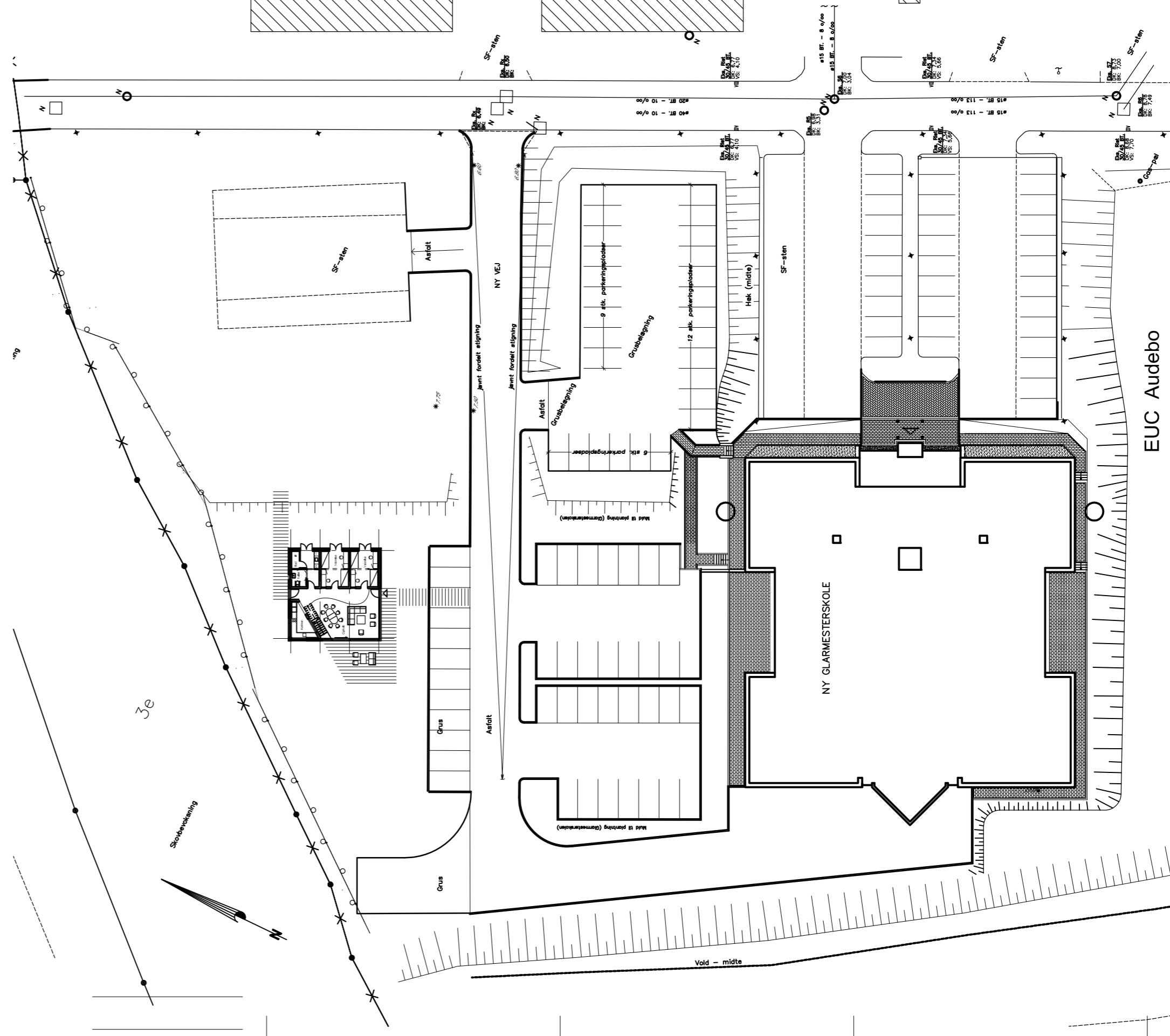


Facade mod nord-vest



Plan af 1. Sal
85 m²

Stueplan
129 m²



EUC Audebo

Ide oplæg

Planer og facader

Mål 1:200 1:75 1:50

PH - 27.11.2008

Arkitektgruppen Holbæk A/S