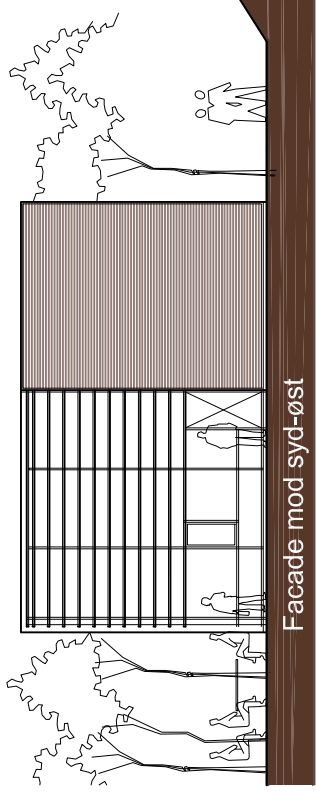
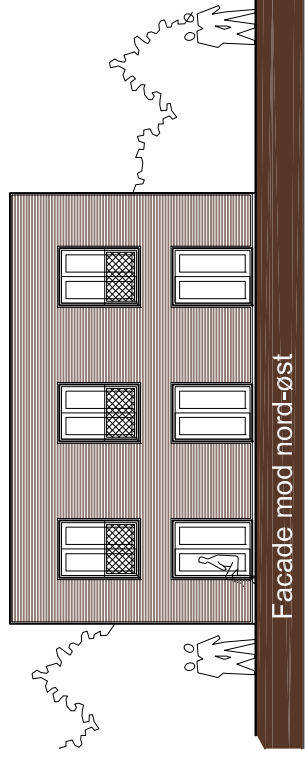


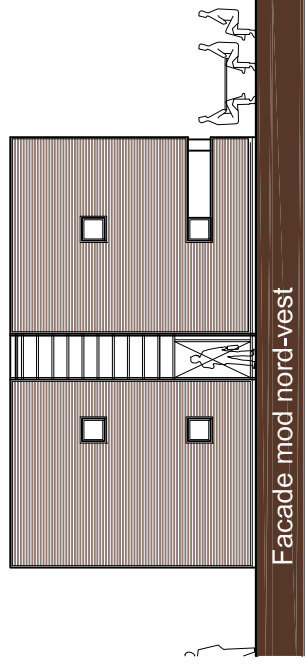
Facade mod syd-vest



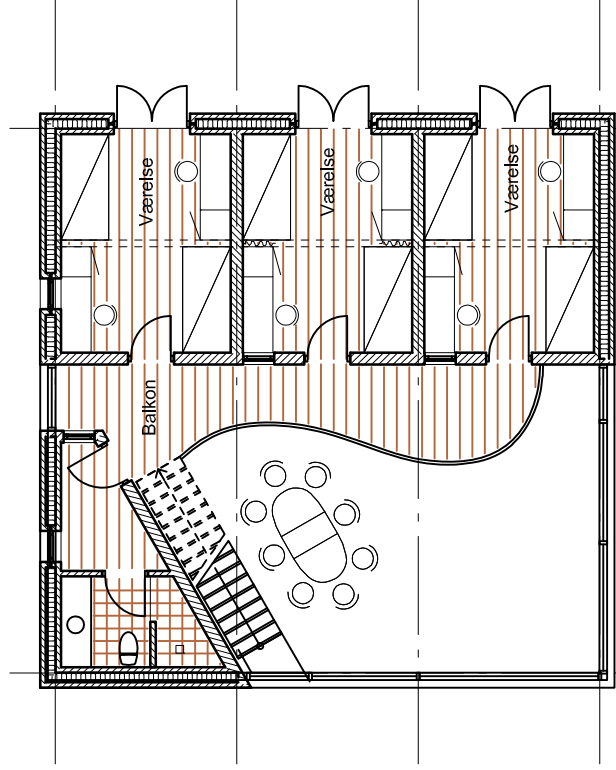
Facade mod syd-øst



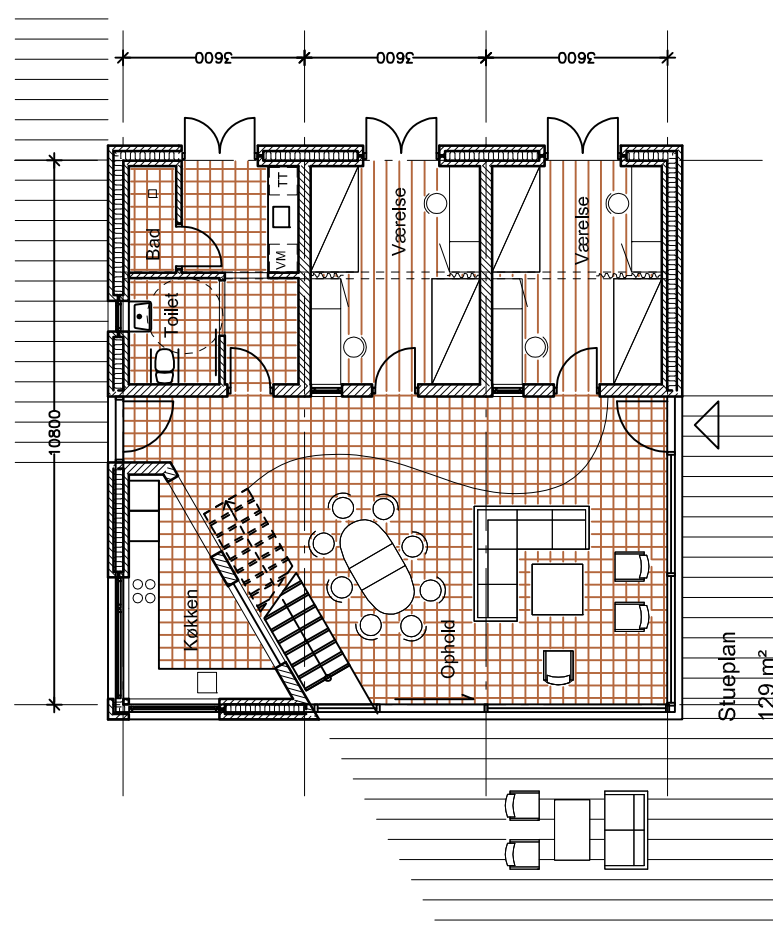
Facade mod nord-øst



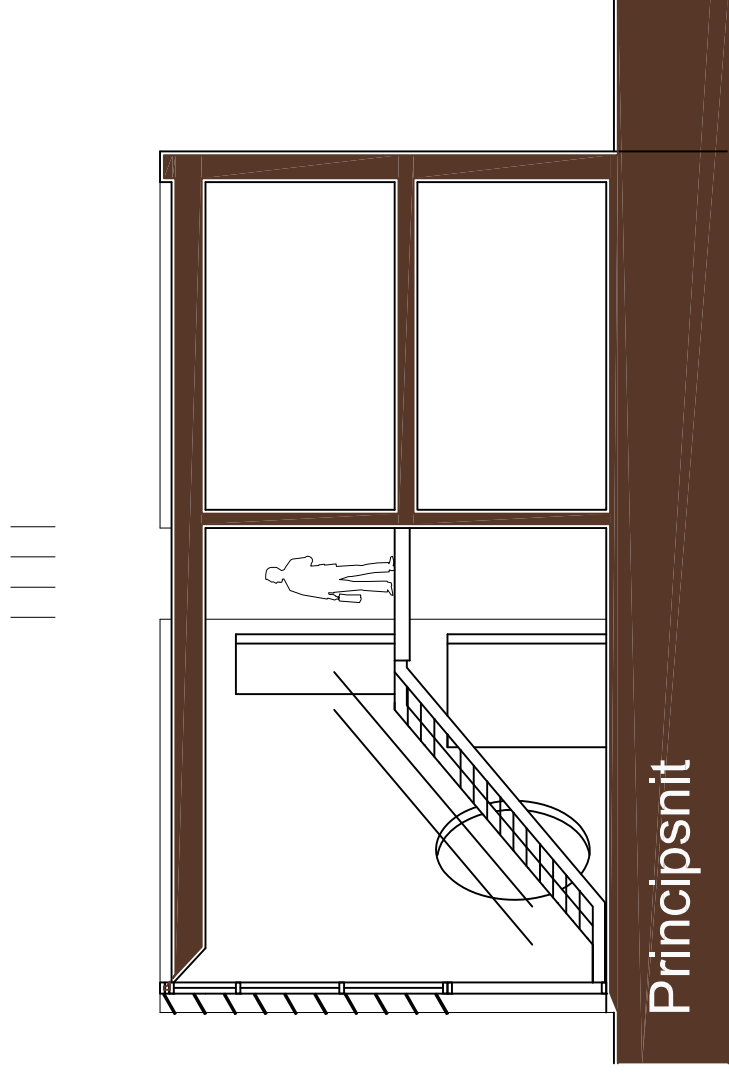
Facade mod nord-vest



Plan af 1. Sal
85 m²



Stueplan
129 m²



Principsnit

Building with Bricks and Bytes

EUC Audebo

Ide oplæg
Planer og facadeer
Mål 1:150 1:200
PH - 27.11.2008